

COVENTRY CAROL

English Traditional
arr. Robert D. Schramm

Andante espressivo ♩ = 84

Refrain

The musical score for "Coventry Carol" is arranged for a brass ensemble and includes a vocal line. The score is in 3/4 time, key of B-flat major, and includes dynamics like *p* and *mf*. The instruments are listed on the left: C Instrument 1, C Instrument 2, Bb Instrument 1, Bb Instrument 2, Eb Instrument 1, Eb Instrument 2, F Instrument 1, F Instrument 2, Bass Clef Instrument 1, and Bass Clef Instrument 2. The vocal line is at the top. The score is divided into two parts: the main melody and the refrain. The refrain is marked with a repeat sign and a key signature change to B major (two sharps).

COVENTRY CAROL

7 **Fine** Verse

The musical score for "COVENTRY CAROL" is arranged for 11 brass parts and a vocal line. The parts are labeled C 1, C 2, Bb 1, Bb 2, Eb 1, Eb 2, F 1, F 2, BC 1, and BC 2. The vocal line is marked "Fine" and "Verse". The score includes dynamics (p, mp, dim., cresc.) and articulation (accents) for each part.

Parts and Dynamics:

- C 1:** p, p, cresc., mp, dim., p
- C 2:** p, p, cresc., mp, dim., p
- Bb 1:** p, p, cresc., mp, dim., p
- Bb 2:** p, p, cresc., mp, dim., p
- Eb 1:** p, p, cresc., mp, dim., p
- Eb 2:** p, p, cresc., mp, dim., p
- F 1:** p, p, cresc., mp, dim., p
- F 2:** p, p, cresc., mp, dim., p
- BC 1:** p, p, cresc., mp, dim., p
- BC 2:** p, p, cresc., mp, dim., p

The Brass Crest 2-Part Hymn Series - Christmas Collection
COVENTRY CAROL

D.C. al Fine ³

15

cresc. *mf* *dim.* *mp*

C 1 *cresc.* *mf* *dim.* *mp*

C 2 *cresc.* *mf* *dim.* *mp*

Bb 1 *cresc.* *mf* *dim.* *mp*

Bb 2 *cresc.* *mf* *dim.* *mp*

Eb 1 *cresc.* *mf* *dim.* *mp*

Eb 2 *cresc.* *mf* *dim.* *mp*

F 1 *cresc.* *mf* *dim.* *mp*

F 2 *cresc.* *mf* *dim.* *mp*

BC 1 *cresc.* *mf* *dim.* *mp*

BC 2 *cresc.* *mf* *dim.* *mp*

COVENTRY CAROL

English Traditional

arr. Robert D. Schramm

Andante espressivo ♩ = 84

Refrain

5

Fine Verse

9

cresc. mp dim. p

13

p cresc.

17

D.C. al Fine

mf dim. mp

Copyright © 2025 The Brass Crest

This arrangement may be freely copied and distributed, provided that this notice is included on all copies.

brasscrest.com

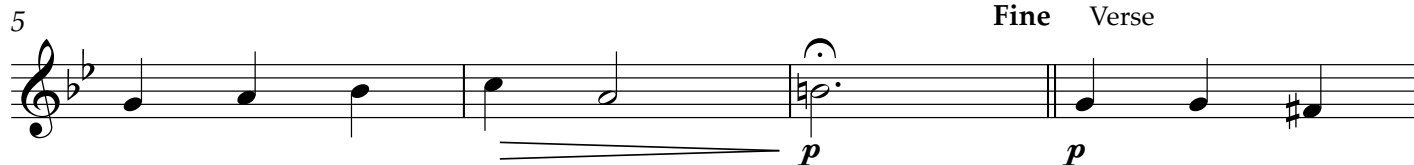
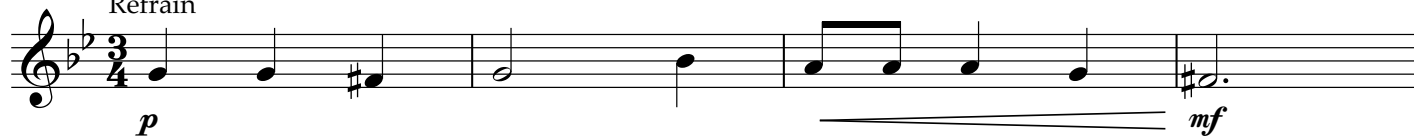
COVENTRY CAROL

English Traditional

arr. Robert D. Schramm

Andante espressivo ♩ = 84

Refrain



D.C. al Fine

Copyright © 2025 The Brass Crest

This arrangement may be freely copied and distributed, provided that this notice is included on all copies.

brasscrest.com

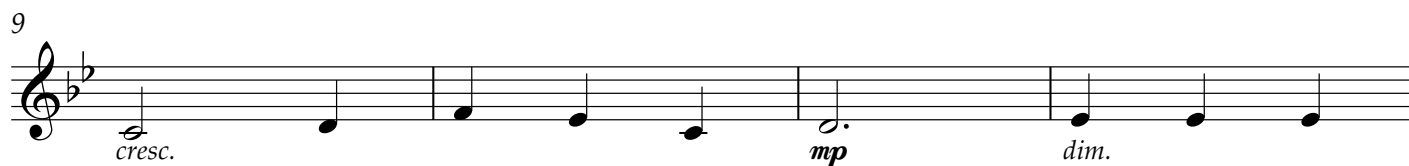
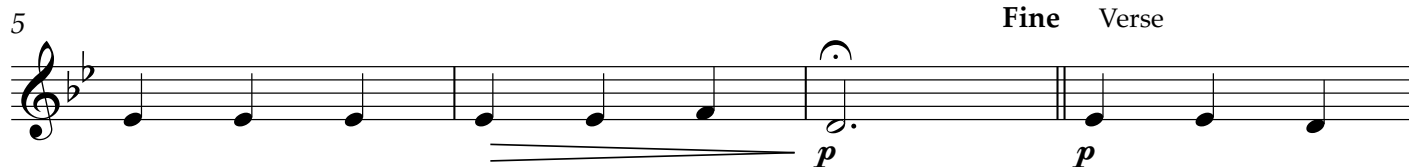
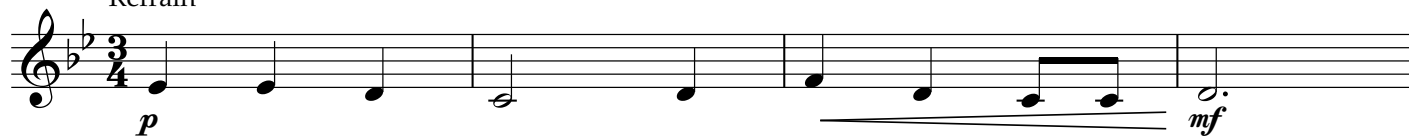
COVENTRY CAROL

English Traditional

arr. Robert D. Schramm

Andante espressivo ♩ = 84

Refrain



Copyright © 2025 The Brass Crest

This arrangement may be freely copied and distributed, provided that this notice is included on all copies.

brasscrest.com

COVENTRY CAROL

English Traditional

arr. Robert D. Schramm

Andante espressivo ♩ = 84

Refrain

5 **Fine** Verse

9 *cresc.* *mp* *dim.*

13 *p* *cresc.*

17 *mf* *dim.* *mp* **D.C. al Fine**

Copyright © 2025 The Brass Crest

This arrangement may be freely copied and distributed, provided that this notice is included on all copies.

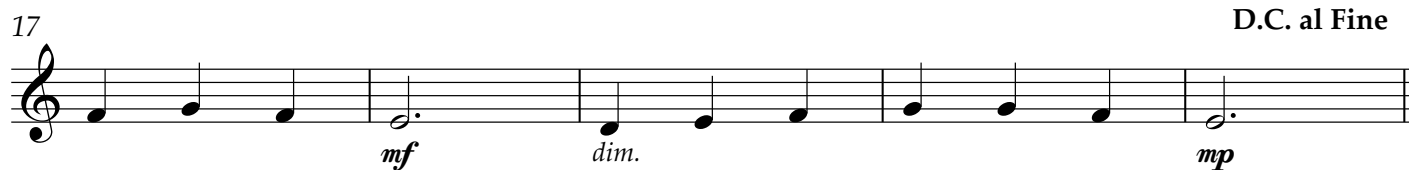
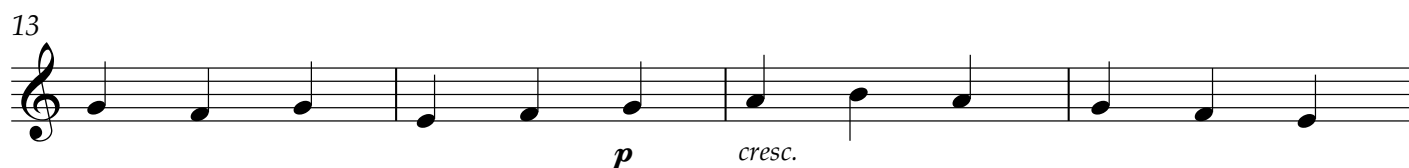
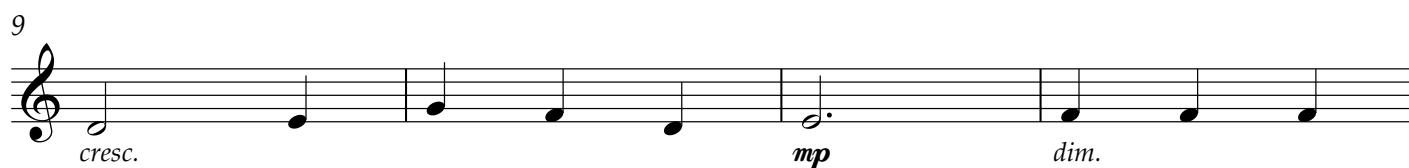
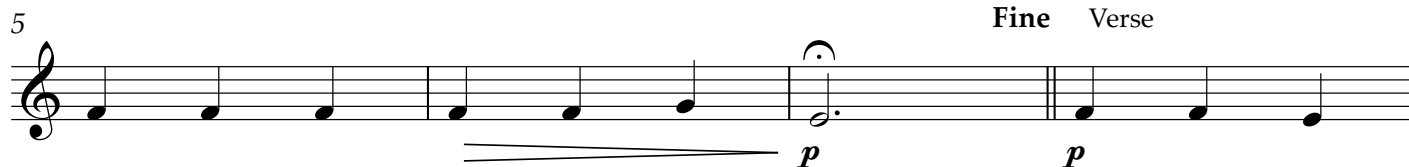
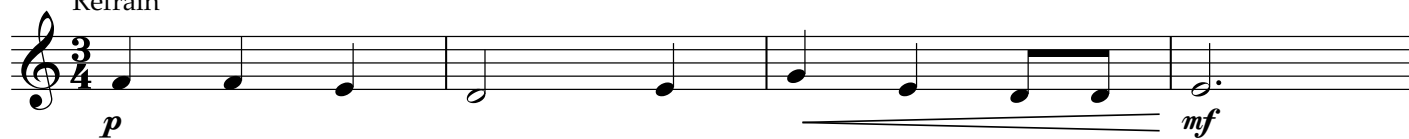
brasscrest.com

COVENTRY CAROL

English Traditional
arr. Robert D. Schramm

Andante espressivo ♩ = 84

Refrain



Copyright © 2025 The Brass Crest

This arrangement may be freely copied and distributed, provided that this notice is included on all copies.

brasscrest.com

COVENTRY CAROL

English Traditional
arr. Robert D. Schramm

Andante espressivo ♩ = 84

Refrain

5

Fine Verse

9

cresc. mp dim.

13

p cresc.

17

D.C. al Fine

mf dim. mp

Copyright © 2025 The Brass Crest

This arrangement may be freely copied and distributed, provided that this notice is included on all copies.

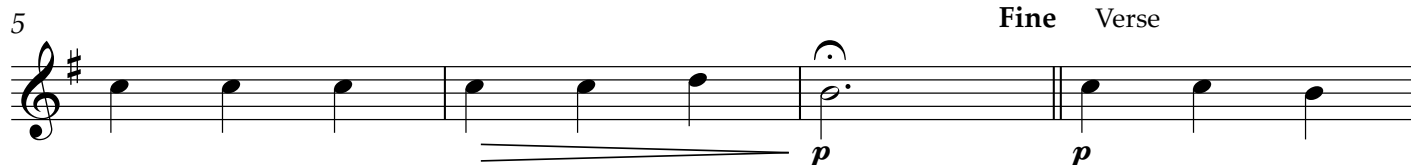
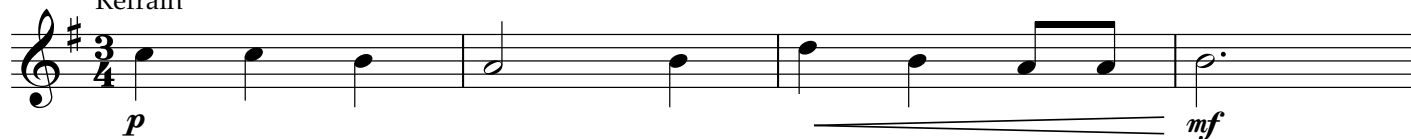
brasscrest.com

COVENTRY CAROL

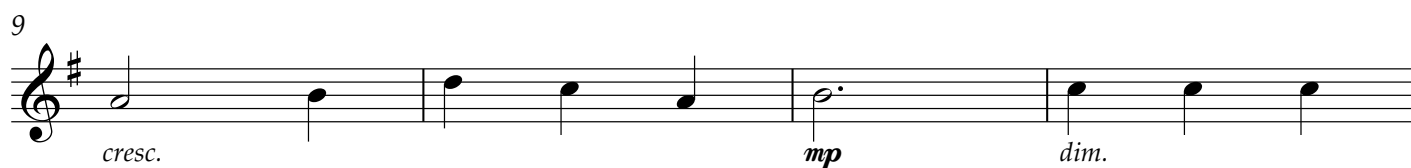
English Traditional
arr. Robert D. Schramm

Andante espressivo ♩ = 84

Refrain



Fine Verse



D.C. al Fine

Copyright © 2025 The Brass Crest

This arrangement may be freely copied and distributed, provided that this notice is included on all copies.

brasscrest.com

COVENTRY CAROL

English Traditional
arr. Robert D. Schramm

Andante espressivo ♩ = 84

Refrain

5

9

13

17

p *mf* *mf* *p* *mp* *dim.* *p* *cresc.* *mf* *dim.* *mp*

Fine Verse

D.C. al Fine

Copyright © 2025 The Brass Crest

This arrangement may be freely copied and distributed, provided that this notice is included on all copies.

brasscrest.com

COVENTRY CAROL

English Traditional
arr. Robert D. SchrammAndante espressivo ♩ = 84
Refrain

5 **Fine** Verse

9 *cresc.* *mp* *dim.*

13 *p* *cresc.*

17 *mf* *dim.* *mp* **D.C. al Fine**

Copyright © 2025 The Brass Crest

This arrangement may be freely copied and distributed, provided that this notice is included on all copies.

brasscrest.com

COVENTRY CAROL

English Traditional
arr. Robert D. SchrammRefrain
Andante espressivo ♩ = 84

5

9

13

17

p *mf*

p *mp* *dim.*

p *cresc.*

mf *dim.* *mp*

Fine Verse

D.C. al Fine

Copyright © 2025 The Brass Crest

This arrangement may be freely copied and distributed, provided that this notice is included on all copies.

brasscrest.com

COVENTRY CAROL

English Traditional
arr. Robert D. SchrammRefrain
Andante espressivo ♩ = 84

5

Fine Verse

9

13

17

D.C. al Fine

Copyright © 2025 The Brass Crest

This arrangement may be freely copied and distributed, provided that this notice is included on all copies.
brasscrest.com